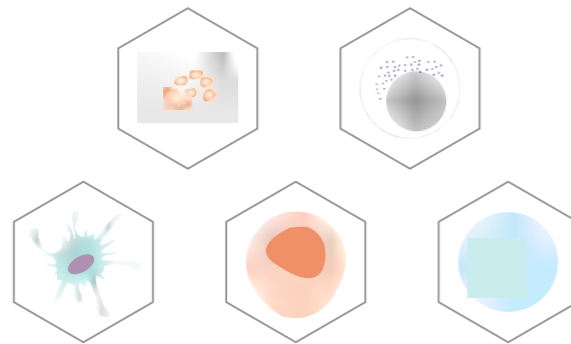


PakGent®



Widely utilized consumables in cell culture



Catalog

+86 (0) 512 6670 0017
info@pakgentbio.com
www.pakgentbio.com



Widely utilized
consumables in
cell culture



cGMP compliant

CE certification

FDA certification

ISO 13485 certification

ISO 9001 certification

ISO 7 & 8 clean room

CONTENTS

SAVE EVERY DROP OF PRECIOUS REAGENT FOR YOU.

01 Cell culture flasks	01-02	07 Square media bottles	07-08
02 Cell culture plates	02-03	08 Cell strainers	08-09
03 Cell culture dishes	03-04	09 Cell scrapers and cell lifters	09-09
04 Cell factories	04-05	10 Cell spreaders	10-10
05 Cell factory accessories	05-06	11 Centrifuge tubes	10-11
06 Erlenmeyer flasks	06-07	12 Serological pipettes	12-12



class 7 clean room



class 8 clean room



No-man workshop



BSL-2 laboratory



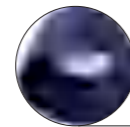
01 Cell culture flasks



PakGent cell culture flasks are designed for culture consistency, cell health, and reproducibility. Choose from a variety of surfaces and sizes with culture areas to suit your specific applications and cell types, providing adherent cell culture surface treatment and suspended cell culture surface.



Two cap options: plug & vent filter (0.22um filter membrane).



The cap is ergonomically designed, reduce cap opening path.



Angled, extra-wide neck provides easier access to growth surface with cell scrapers or pipettes.



Molded graduations help easy and quick measurement of media growth.

Cell culture flasks ordering information

Part No.	Growth area (cm ²)	Volume (ml)	Recommended working vol. (ml)	Max. working vol. (ml)	TC	Cap	Sterility level	Pack
CL-F025P	25	50	5~7.5	19	x	Plug Cap	SAL=10 ⁶	10/bag, 20bags/case
CL-FT025P	25	50	5~7.5	19	✓	Plug Cap	SAL=10 ⁶	10/bag, 20bags/case
CL-F025V	25	50	5~7.5	19	x	Vent Cap	SAL=10 ⁶	10/bag, 20bags/case
CL-FT025V	25	50	5~7.5	19	✓	Vent Cap	SAL=10 ⁶	10/bag, 20bags/case
CL-F075P	75	250	15~22.5	55	x	Plug Cap	SAL=10 ⁶	5/bag, 20bags/case
CL-FT075P	75	250	15~22.5	55	✓	Plug Cap	SAL=10 ⁶	5/bag, 20bags/case
CL-F075V	75	250	15~22.5	55	x	Vent Cap	SAL=10 ⁶	5/bag, 20bags/case
CL-FT075V	75	250	15~22.5	55	✓	Vent Cap	SAL=10 ⁶	5/bag, 20bags/case
CL-F175P	175	600	35~52.5	150	x	Plug Cap	SAL=10 ⁶	5/bag, 6bags/case
CL-FT175P	175	600	35~52.5	150	✓	Plug Cap	SAL=10 ⁶	5/bag, 6bags/case

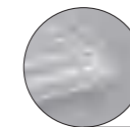
Cell culture flasks ordering information

Part No.	Growth area (cm ²)	Volume (ml)	Recommended working vol. (ml)	Max. working vol. (ml)	TC	Cap	Sterility level	Pack
CL-F175V	175	600	35~52.5	150	x	Vent Cap	SAL=10 ⁶	5/bag, 6bags/case
CL-FT175V	175	600	35~52.5	150	✓	Vent Cap	SAL=10 ⁶	5/bag, 6bags/case
CL-F225P	225	900	60~90	310	x	Plug Cap	SAL=10 ⁶	5/bag, 5bags/case
CL-FT225P	225	900	60~90	310	✓	Plug Cap	SAL=10 ⁶	5/bag, 5bags/case
CL-F225V	225	900	60~90	310	x	Vent Cap	SAL=10 ⁶	5/bag, 5bags/case
CL-FT225V	225	900	60~90	310	✓	Vent Cap	SAL=10 ⁶	5/bag, 5bags/case

02 Cell culture plates



Choose from a wide range of styles, sizes, and surfaces to suit a variety of cell culture applications.



Designed to prevent evaporation and cross-contamination with one-way lid orientation and rings in lid over each well.



Striped design, easy to grab with gloves.



Flat bottom and individual packing design, easy to stack.



Raised well rims to lower risk of cross contamination.



Clear alphanumeric numbering, easy to distinguish, record.

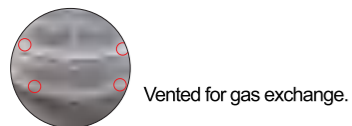
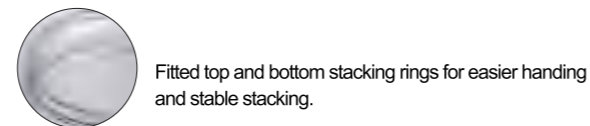
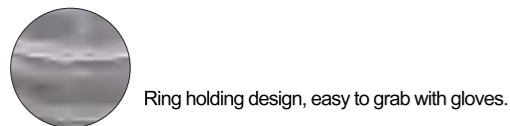
Cell culture plates ordering information

Part No.	Well	Well type	Culture area of a single well (cm ²)	Recommended working volume of a single well (ml)	TC	Sterility level	Pack
CL-P006	6	Flat	10.15	1.9~2.9	✗	SAL=10 ⁶	Individual pack, 100/case
CL-PT006	6	Flat	10.15	1.9~2.9	✓	SAL=10 ⁶	Individual pack, 100/case
CL-P012	12	Flat	3.51	0.69~1.1	✗	SAL=10 ⁶	Individual pack, 100/case
CL-PT012	12	Flat	3.51	0.69~1.1	✓	SAL=10 ⁶	Individual pack, 100/case
CL-P024	24	Flat	1.92	0.37~0.56	✗	SAL=10 ⁶	Individual pack, 100/case
CL-PT024	24	Flat	1.92	0.37~0.56	✓	SAL=10 ⁶	Individual pack, 100/case
CL-P048	48	Flat	1.11	0.25~0.38	✗	SAL=10 ⁶	Individual pack, 100/case
CL-PT048	48	Flat	1.11	0.25~0.38	✓	SAL=10 ⁶	Individual pack, 100/case
CL-P096	96	Flat	0.31	0.077~0.21	✗	SAL=10 ⁶	Individual pack, 100/case
CL-PT096	96	Flat	0.31	0.077~0.21	✓	SAL=10 ⁶	Individual pack, 100/case

03 Cell culture dishes



Cell culture dishes offer the stable surface for cell proliferation and distortion-free microscopic observation. Protective lids are often supplied and can come vented for consistent gas exchange.



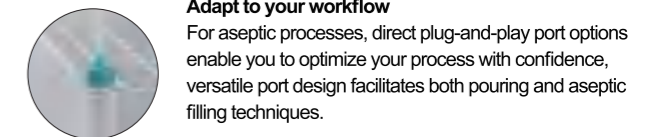
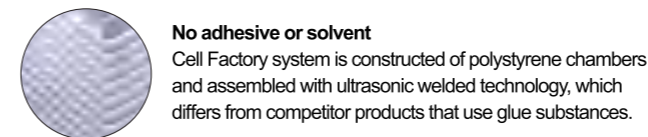
Cell culture dishes ordering information

Part No.	Culture area (cm ²)	Recommended working volume (ml)	Dimension	TC	Sterility level	Pack
CL-D035	8.9	2.1~3.7	35*10mm	✗	SAL=10 ⁶	20/bag, 25bags/case
CL-DT035	8.9	2.1~3.7	35*10mm	✓	SAL=10 ⁶	20/bag, 25bags/case
CL-D060	21.3	4.0~7.0	60*15mm	✗	SAL=10 ⁶	10/bag, 50bags/case
CL-DT060	21.3	4.0~7.0	60*15mm	✓	SAL=10 ⁶	10/bag, 50bags/case
CL-D100	57.2	11.3~18.8	100*20mm	✗	SAL=10 ⁶	10/bag, 30bags/case
CL-DT100	57.2	11.3~18.8	100*20mm	✓	SAL=10 ⁶	10/bag, 30bags/case
CL-D150	143.7	25.1~50.3	150*20mm	✗	SAL=10 ⁶	5/bag, 20bags/case
CL-DT150	143.7	25.1~50.3	150*20mm	✓	SAL=10 ⁶	5/bag, 20bags/case

04 Cell factories



- PakGent cell factory is suitable for the production of human and animal vaccines, therapeutic proteins, cell therapy and gene therapy products.
- PakGent Cell Factory offers standard large port cell factory systems. It is convenient for customers to seamlessly switch between manual R&D operations and large-scale closed production. The standard large port cell factory adopts a large port design, which facilitates rapid perfusion, emptying and balancing of liquids, and also provides better ventilation conditions for cell culture.



Cell factories ordering information

Part No.	Layer	Nominal dimensions	Cell culture area	TC	Ports	Sterility level	Pack
CL-MC01	1	335*205*36 mm	632cm ²	✓	large	SAL=10 ⁶	6/case
CL-MC02	2	335*205*53 mm	1264cm ²	✓	large	SAL=10 ⁶	6/case
CL-MC04	4	335*205*87 mm	2526cm ²	✓	large	SAL=10 ⁶	6/case
CL-MC10	10	335*205*189 mm	6316cm ²	✓	large	SAL=10 ⁶	6/case
CL-MC40	40	335*205*698 mm	25265cm ²	✓	large	SAL=10 ⁶	2/case

05 Cell factory accessories



Cell factory accessories complying with the requirements of cell therapy guidelines, a fully verified semi-closed/closed system is provided. Seamlessly integrates with PakGent fluid solution products to increase the ease of use of the culture process.

Cell factory accessories (I series) ordering information

Part No.	Describe	Sterility level	Pack
CFA-38P-FI	3/8 MCP Insert, 75cm C-Flex tube ASSY accessory, I series	SAL=10 ⁶	1/bag
CFA-14P-FI	1/4 MCP Insert, 75cm C-Flex tube ASSY accessory, I series	SAL=10 ⁶	1/bag
CFA-38S-FI	3/8 MCP Insert, 75cm silicone tube ASSY accessory, I series	SAL=10 ⁶	1/bag
CFA-14S-FI	1/4 MCP Insert, 75cm silicone tube ASSY accessory, I series	SAL=10 ⁶	1/bag
CFA-022-FI	0.22um Butterfly filter ASSY accessory, I series	SAL=10 ⁶	1/bag
CFA-022A-FI	0.22um Bag filter ASSY accessory, I series	SAL=10 ⁶	1/bag
CFA-38P-AFI	3/8 MPC and CF C-Flex tube quick connector ASSY accessory, I series	SAL=10 ⁶	1/bag
CFA-38S-AFI	3/8 MPC and CF Silicone tube quick connector ASSY accessory, I series	SAL=10 ⁶	1/bag

Cell factory accessories (L series) ordering information

Part No.	Describe	Sterility level	Pack
CFA-38P-F	3/8 MCP Insert, 75cm C-Flex tube ASSY accessory, L series	SAL=10 ⁶	1/bag
CFA-14P-F	1/4 MCP Insert, 75cm C-Flex tube ASSY accessory, L series	SAL=10 ⁶	1/bag
CFA-38S-F	3/8 MCP Insert, 75cm silicone tube ASSY accessory, L series	SAL=10 ⁶	1/bag
CFA-14S-F	1/4 MCP Insert, 75cm silicone tube ASSY accessory, L series	SAL=10 ⁶	1/bag
CFA-022-F	0.22um Butterfly filter ASSY accessory, L series	SAL=10 ⁶	1/bag
CFA-022A-F	0.22um Bag filter ASSY accessory, L series	SAL=10 ⁶	1/bag
CFA-38P-AF	3/8 MPC and CF C-Flex tube quick connector ASSY accessory, L series	SAL=10 ⁶	1/bag
CFA-38S-AF	3/8 MPC and CF Silicone tube quick connector ASSY accessory, L series	SAL=10 ⁶	1/bag

06 Erlenmeyer flasks



- Erlenmeyer flask is made of medical grade PETG/PC material, which meets the requirements of food and drug contact management.
- The bottle body is seamless and formed in one piece, avoiding surface scars or cell wall rupture.
- The bottle size meets the international SBS standard and is suitable for quick connection of bioreactors.



The surface smoothness meets the mirror requirements, reducing the risk of cell adhesion.



With a smooth interior and exterior devoid of any concave or convex surfaces, and clear scale markings



The vent cap is covered with 0.22µm hydrophobic membrane to prevent microbial contamination



The product adopts independent vacuum packing, which is convenient to access and avoid cross infection.

Erlenmeyer flasks ordering information

Part No.	Volume	Material	Cap	Sterility level	Pack
EFC-125P	125ml	PC	Plug Cap	SAL=10 ⁶	24/case
EFC-250P	250ml	PC	Plug Cap	SAL=10 ⁶	12/case
EFC-500P	500ml	PC	Plug Cap	SAL=10 ⁶	12/case
EFC-1000P	1000ml	PC	Plug Cap	SAL=10 ⁶	6/case
EFC-125V	125ml	PC	Vent Cap	SAL=10 ⁶	24/case
EFC-250V	250ml	PC	Vent Cap	SAL=10 ⁶	12/case
EFC-500V	500ml	PC	Vent Cap	SAL=10 ⁶	12/case
EFC-1000V	1000ml	PC	Vent Cap	SAL=10 ⁶	6/case
EFG-125P	125ml	PETG	Plug Cap	SAL=10 ⁶	24/case
EFG-250P	250ml	PETG	Plug Cap	SAL=10 ⁶	12/case
EFG-500P	500ml	PETG	Plug Cap	SAL=10 ⁶	12/case
EFG-1000P	1000ml	PETG	Plug Cap	SAL=10 ⁶	6/case
EFG-125V	125ml	PETG	Vent Cap	SAL=10 ⁶	24/case
EFG-250V	250ml	PETG	Vent Cap	SAL=10 ⁶	12/case
EFG-500V	500ml	PETG	Vent Cap	SAL=10 ⁶	12/case
EFG-1000V	1000ml	PETG	Vent Cap	SAL=10 ⁶	6/case

Erlenmeyer flasks (Baffled) ordering information

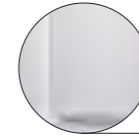
Part No.	Volume	Material	Cap	Sterility level	Pack
EFBC-125P	125ml	PC	Plug Cap	SAL=10 ⁶	24/case
EFBC-250P	250ml	PC	Plug Cap	SAL=10 ⁶	12/case
EFBC-500P	500ml	PC	Plug Cap	SAL=10 ⁶	12/case
EFBC-1000P	1000ml	PC	Plug Cap	SAL=10 ⁶	6/case
EFBC-125V	125ml	PC	Vent Cap	SAL=10 ⁶	24/case
EFBC-250V	250ml	PC	Vent Cap	SAL=10 ⁶	12/case
EFBC-500V	500ml	PC	Vent Cap	SAL=10 ⁶	12/case
EFBC-1000V	1000ml	PC	Vent Cap	SAL=10 ⁶	6/case



The bottle mouth chamfered design to prevent leakage.



Large temperature resistance tolerance: -80°C to 60°C.



It is highly transparent with clear and precise scale markings.



It boasts anti-crack, anti-drop, and anti-puncture properties.

Square media bottles ordering information

Part No.	Volume	Material	Sterility level	Pack
SMB030T	30ml	PET	SAL=10 ⁶	40/bag, 7bags/case
SMB060T	60ml	PET	SAL=10 ⁶	40/bag, 5bags/case
SMB125T	125ml	PET	SAL=10 ⁶	24/bag, 4bags/case
SMB250T	250ml	PET	SAL=10 ⁶	30/bag, 2bags/case
SMB500T	500ml	PET	SAL=10 ⁶	20/bag, 2bags/case
SMB1000T	1000ml	PET	SAL=10 ⁶	12/bag, 2bags/case

Part No.	Volume	Material	Sterility level	Pack
SMB030G	30ml	PETG	SAL=10 ⁶	40/bag, 7bags/case
SMB060G	60ml	PETG	SAL=10 ⁶	40/bag, 5bags/case
SMB125G	125ml	PETG	SAL=10 ⁶	24/bag, 4bags/case
SMB250G	250ml	PETG	SAL=10 ⁶	30/bag, 2bags/case
SMB500G	500ml	PETG	SAL=10 ⁶	20/bag, 2bags/case
SMB1000G	1000ml	PETG	SAL=10 ⁶	12/bag, 2bags/case

07 Square media bottles

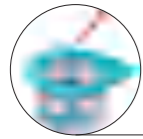


The square media bottles are made of high-quality materials using precision molds and automated equipment, ensuring exceptional transparency and durability. These products are designed for the long-term storage of aqueous solutions, such as serum, media, pancreatic enzymes, reagents, and other similar substances.

08 Cell strainers



PakGent® cell strainers are sterile, using these versatile cell strainers to prepare samples for flow cytometry, single cell suspensions of blood cells, specimens for primary cell cultures and immunogens, as well as primary cells from tissues.



It is highly transparent with clear and precise scale markings.



Nylon mesh.

Cell strainers ordering information

Part No.	Describe	Sterility level	Pack
DCS-40A	Disposable cell strainer, 40µm	SAL=10 ⁶	100/case
DCS-70A	Disposable cell strainer, 70µm	SAL=10 ⁶	100/case
DCS-100A	Disposable cell strainer, 100µm	SAL=10 ⁶	100/case

09 Cell scrapers and cell lifters



Specifically designed to make collecting cells easier and more effective, scraper use in flasks, or lifter use in harvesting cells (especially stem cells) in dishes.



Individual packing, easy to use.

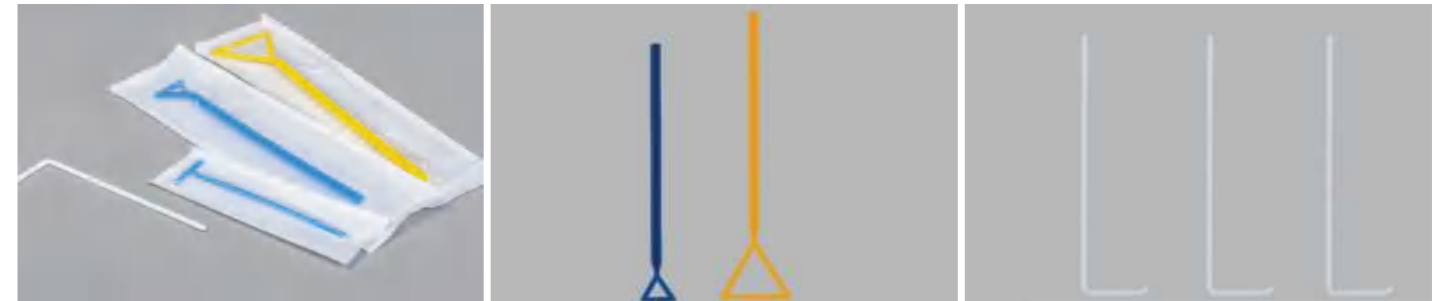


Blades rotated freely to reach all corners of the culture flask.

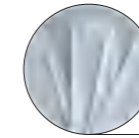
Cell scrapers and cell lifters ordering information

Part No.	Describe	Sterility level	Pack
DCS180	Disposable cell scraper, 180*18mm	SAL=10 ⁶	100/case
DCS250	Disposable cell scraper, 250*18mm	SAL=10 ⁶	200/case
DCL180	Disposable cell lifter, 180*20mm	SAL=10 ⁶	100/case

10 Cell spreaders



Smoothly smear growth mediums in petri-dishes or plates more rapidly and uniformly with cell spreaders. All spreaders were designed for the most ideal distribution for the best bacteria growth testing conditions. Select from any of the three edgeless styles; L-shaped, T-shaped, or triangular shaped bars.



Individual packing, easy to use.

Cell spreaders ordering information

Part No.	Describe	Sterility level	Pack
DCS149-L	Disposable cell spreaders, 149*40mm, L-shaped	SAL=10 ⁶	400/box, 10boxes/case
DCS215-TS	Disposable cell spreaders, 215*30mm, triangle-shaped	SAL=10 ⁶	100/box, 10boxes/case
DCS240-TS	Disposable cell spreaders, 240*60mm, triangle-shaped	SAL=10 ⁶	100/box, 10boxes/case
DCS140-T	Disposable cell spreaders, 140*35mm, T-shaped	SAL=10 ⁶	400/box, 10boxes/case

11 Centrifuge tubes



PakGent® Centrifuge tubes are designed for your everyday centrifugation and storage needs. These tubes include large white writing area and easy-to-read black graduations. Racked tubes are packed in a reusable, autoclavable, and freezable (-80°C) polypropylene rack which has inter-locks for you to create a workstation.



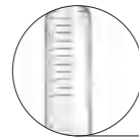
Threaded cap for one hand operation.



Ergonomic, collapsible storage racks made from recycled materials are better for the lab and the environment. Available for both 15 ml and 50 ml sizes.



User-friendly with a large writing area.



Uniform wall thickness and stable centrifugal effect.

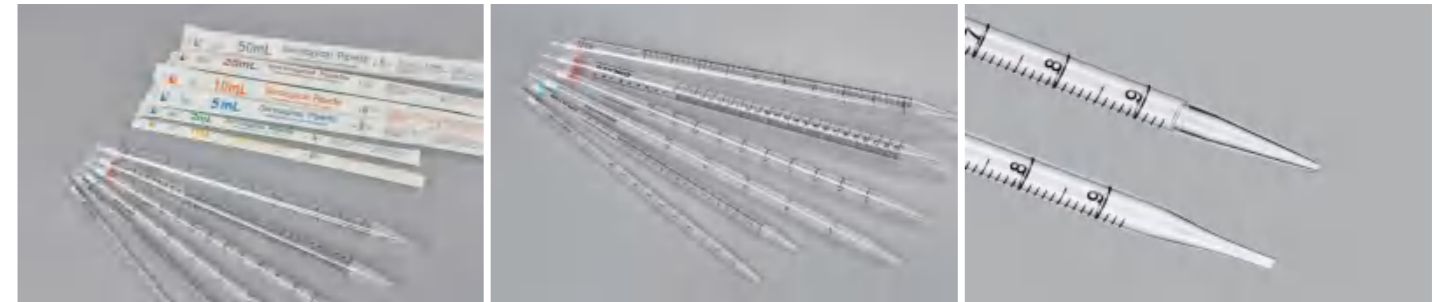
Centrifuge tubes ordering information

Part No.	Volume	Centrifuge force	Cap Color	Bottom	Package type	Sterility level	Pack
CT50B-B	50ml	15000xg	dark blue	conical bottom	bulk pack	SAL=10 ⁶	25/bag, 20bags/case
CT50R-B	50ml	15000xg	dark blue	conical bottom	rack pack	SAL=10 ⁶	25/rack, 20racks/case
CT15B-B	15ml	15000xg	dark blue	conical bottom	bulk pack	SAL=10 ⁶	25/bag, 20bags/case
CT15R-B	15ml	15000xg	dark blue	conical bottom	rack pack	SAL=10 ⁶	25/rack, 20racks/case
CT50BS-B	50ml	3500xg	dark blue	self-standing	bulk pack	SAL=10 ⁶	25/bag, 20bags/case
CT50RS-B	50ml	3500xg	dark blue	self-standing	rack pack	SAL=10 ⁶	25/rack, 20racks/case
CT50B-L	50ml	15000xg	light blue	conical bottom	bulk pack	SAL=10 ⁶	25/bag, 20bags/case
CT50R-L	50ml	15000xg	light blue	conical bottom	rack pack	SAL=10 ⁶	25/rack, 20racks/case
CT15B-L	15ml	15000xg	light blue	conical bottom	bulk pack	SAL=10 ⁶	25/bag, 20bags/case
CT15R-L	15ml	15000xg	light blue	conical bottom	rack pack	SAL=10 ⁶	25/rack, 20racks/case
CT50BS-L	50ml	3500xg	light blue	self-standing	bulk pack	SAL=10 ⁶	25/bag, 20bags/case
CT50RS-L	50ml	3500xg	light blue	self-standing	rack pack	SAL=10 ⁶	25/rack, 20racks/case

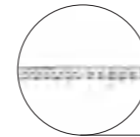
Microcentrifuge tubes ordering information

Part No.	Volume	Centrifuge force	Package type	Pack
MCT50	5.0ml	25000g	bulk pack	200/bag, 10bags/case
MCT20	2.0ml	25000g	bulk pack	500/bag, 10bags/case
MCT15	1.5ml	25000g	bulk pack	500/bag, 10bags/case
MCT05	0.5ml	25000g	bulk pack	1000/bag, 10bags/case

12 Serological pipettes



Rigorous quality specifications and convenient functionality make PakGent® serological pipettes as an excellent choice for routine laboratory work and cell studies. Bold, clear bidirectional scale makes liquid capacity and sample addition easy to read. A variety of specifications and packaging options are available. Certified scale accuracy and precision calibration ensures +/-2% accuracy in the 1ml and 2ml total volume range and +/-1% accuracy in the 5 ml, 10ml, 25ml, 50ml total volume range.



Bold, clear bi-directional graduations make it easy-to-read fluid volumes and dispensing amounts.

Serological pipettes ordering information

Part No.	Volume	construction	Package type	Sterility level	Pack
SPTS01	1ml	one piece construction	Individual pack	SAL=10 ⁶	50/bag, 20bags/case
SPTB01	1ml	one piece construction	bulk pack	SAL=10 ⁶	50/bag, 20bags/case
SPTS02	2ml	one piece construction	Individual pack	SAL=10 ⁶	50/bag, 20bags/case
SPTB02	2ml	one piece construction	bulk pack	SAL=10 ⁶	50/bag, 20bags/case
SPTS05	5ml	one piece construction	Individual pack	SAL=10 ⁶	50/bag, 10bags/case
SPTB05	5ml	one piece construction	bulk pack	SAL=10 ⁶	50/bag, 10bags/case
SPTS10	10ml	one piece construction	Individual pack	SAL=10 ⁶	50/bag, 10bags/case
SPTB10	10ml	one piece construction	bulk pack	SAL=10 ⁶	50/bag, 10bags/case
SPTS10A	10ml	two pieces welded construction	Individual pack	SAL=10 ⁶	50/bag, 10bags/case
SPTB10A	10ml	two pieces welded construction	bulk pack	SAL=10 ⁶	50/bag, 10bags/case
SPTS25	25ml	two pieces welded construction	Individual pack	SAL=10 ⁶	25/bag, 10bags/case
SPTB25	25ml	two pieces welded construction	bulk pack	SAL=10 ⁶	25/bag, 10bags/case
SPTS50	50ml	two pieces welded construction	Individual pack	SAL=10 ⁶	25/bag, 8bags/case
SPTB50	50ml	two pieces welded construction	bulk pack	SAL=10 ⁶	25/bag, 8bags/case